

MTS TILTROTATOR



MTS TILTROTATOR

The 3D Wrist for your Excavator

- **Sandwich construction**

No load restrictions in extreme use because the tiltrotator can be removed

- **Precise positioning**

The low overall structural height allows maximum maneuverability in use

- **Fully hydraulic tool change**

The optional hydraulic rotary union allows the attachment tools to be changed fully hydraulically without leaving the operator's cab

- **Maximum side clearance**

Thanks to the internal swiveling cylinder, there are no hydraulic cylinders that can malfunction or be damaged.

- **Maximum safety**

Standard integration of original, change device-specific safety devices, e.g. OQ locking assistant or LH sensor system

- **Optional:**

also available with mechanical quick hitch

- **High power in all positions**

The swiveling cylinders ensure an enormous swivel moment and fast tilting

- **Maximum freedom from damage**

The absence of protruding hydraulic cylinders eliminates typical sources of damage



OVERLOAD assistant

Avoiding damages



Hydraulic valves detect when the excavator rests on one side of the bucket, for example, and automatically align the tiltrotator free of load.

SERVICE settings

Maintain an overview

The SERVICE assistant gives details of current operating hours, loads and maintenance work. This allows the operator to always have an overview of when lubrication work is required, for example.



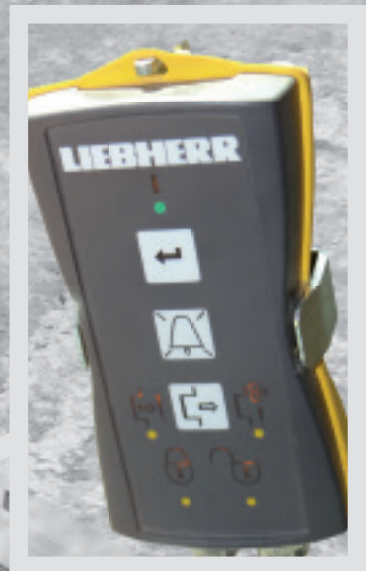
MTS CONTROL

CPX terminal with MTS CONTROL software

The CPX terminal with the MTS Control software provides even more safety than before. The small and easy-to-handle touch screen with integrated device recognition is extremely user-friendly and a valuable co-pilot for every application of our tiltrotator.



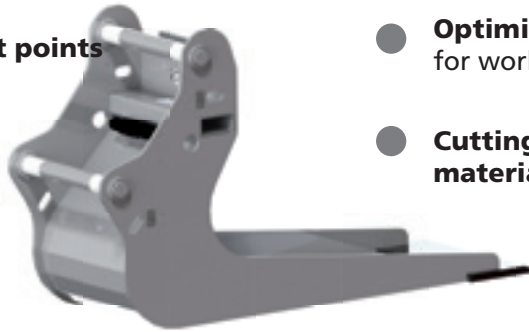
Our Likifix SW33 and Likifix SW48 tiltrotators are also available for the Liebherr LHS control system.



MTS TILTROTATOR ATTACHMENT TOOLS

Power spade

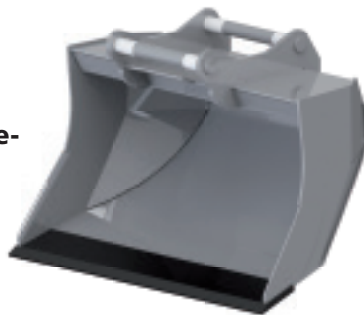
- Lashing and attachment points for transport
- Document box
- Lifting fork intake
- Optimized profile shape for working in a channel (e.g. for crossings)
- Cutting edge made of wear-resistant material (HARDOX)



Power spade	OQ45	OQ65	OQ70	OQ70/55	OQ80	SW33	SW48
Weight [kg]	140	230	435	430	460	200	415
Cutting width [mm]	360	540	650	650	690	435	620

Tilt bucket

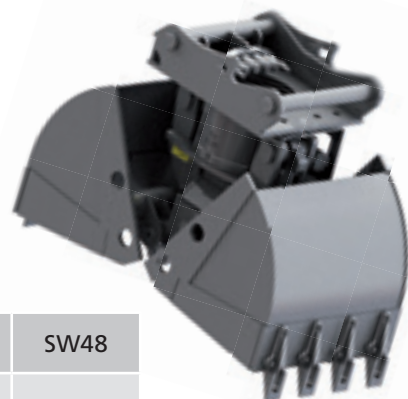
- Cutting edge made of wear-resistant material
- Without teeth
- Optimized profile shape for tiltrotators



Tilt bucket	OQ45	OQ60		OQ65	OQ70/55	SW33	SW48
Fill volume [L] (acc. to SAE)	370	750	800	900	1,000	800	1,000
Cutting edge width [mm]	1,200	1,300	1,400	1,500	1,600	1,400	1,600

Clamshell bucket

- Low structural height
- Without rotary motor



Clamshell bucket	OQ70/55		OQ65		SW48
Fill volume [L] (acc. to SAE)	300	390	300	390	390
Clamshell width [mm]	400	600	400	600	600

Grading beam

- **Lashing and attachment points** for transport
- **Document box**
- **Lifting fork intake**



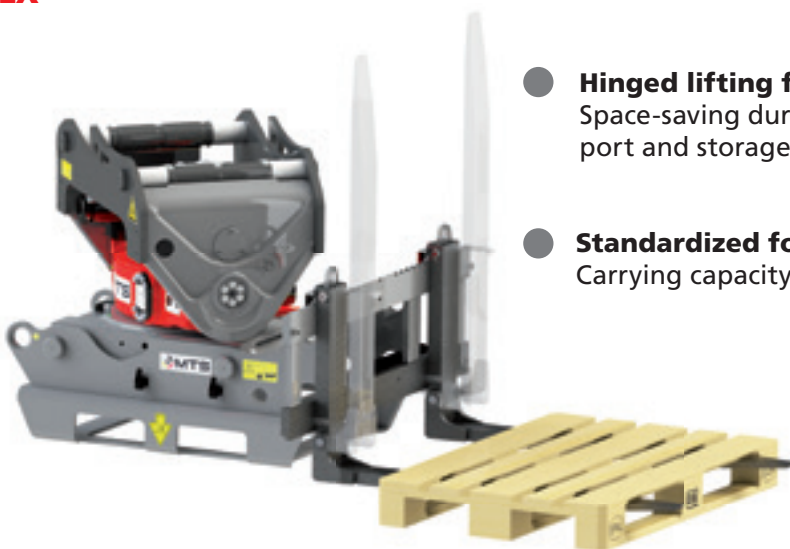
- **Cutting edge made of wear-resistant DOX)**
- **Bucket geometry** for material handling
- **Adjustable pressure roller**

Grading beam	P200	P250	P300
Weight* [kg]	710	790	870
Cutting width [mm]	2,000	2,500	3,000

* without adapter plate

MTS-COMBI lifting fork HebLX

- **Lashing and attachment points** for transport
- **2 in 1:** Transport frame and lifting fork in one
- **Lifting fork intake**
- **Document box**



- **Hinged lifting forks**
Space-saving during transport and storage
- **Standardized fork intake**
Carrying capacity 1,500 kg

COMBI lifting fork	OQ65	OQ70	OQ70/55	SW33	SW48
Weight [kg]	270	290	280	260	260
Fork carrier width [mm]	1,210	1,210	1,210	1,210	1,210

Grapple module TRG11 for MTS-Tiltrotator TR10

Grapple module with 3-finger claws as an integrated aid for picking up and handling materials such as pipes or stones

for quick hitch	OQ45-4 and OQ45-5
max. opening dimension	644 mm
Weight	92 kg
Carrying capacity	500 kg
Rotation	360°



TECHNICAL SPECIFICATIONS



Recommended excavator size		up to 10 to	up to 18 to	up to 22 to	up to 28 to
Quick change device	OQ45	Range of variants	-	-	-
	OQ60-5	-	Basic or Pro 1	-	-
	OQ65	-	Basic or Pro 2	Basic or Pro 2	-
	OQ70	-	-	Basic or Pro 2	-
	OQ70/55	-	-	Basic or Pro 2	Basic or Pro 2
	OQ80	-	-	-	Basic or Pro 2
	SW33	-	Basic or Pro 1	Basic or Pro 1	-
	SW48	-	-	Basic or Pro 1	Basic or Pro 1
as fixed attachment		✓	✗	✗	✗
with grapple module		✓	✗	✗	✗

Basic = Quick hitch with mechanical locking

Pro 1 (HV hydr. locking) = Quick hitch with hydr. locking incl. MTS-NAVI sensor system

Pro 2 (HW hydr. tool) = Quick hitch with hydr. locking + hydr. rotary union incl. MTS-NAVI sensor system

Weight [kg]*	415	565	685	845
Length [mm]	810	855	890	1,060
Width [mm]*	520	545	640	690
Swivel angle [°]	2x45	2x40	2x40	2x40
Permissible tearing force [kNm]	50	130	150	180
Swivel moment [kNm]	33	22	32	33
Torque [kNm]	9	11	11	11
Rotational speed [rpm] at 70l/min	9	10	10	10
Operating pressure [bar]	350	250	250	250

✓ = available ✗ = not available

* Depending on the change device used